

Linear Versus Branching Depictions of Evolutionary History: Implications for Diagram Design

Laura R. Novick,^a Courtney K. Shade,^a Kefyn M. Catley^b

^a*Department of Psychology and Human Development, Vanderbilt University*

^b*Department of Biology, Western Carolina University*

Received 30 March 2009; received in revised form 11 August 2009; accepted 22 September 2009

Abstract

This article reports the results of an experiment involving 108 college students with varying backgrounds in biology. Subjects answered questions about the evolutionary history of sets of hominid and equine taxa. Each set of taxa was presented in one of three diagrammatic formats: a noncladogenic diagram found in a contemporary biology textbook or a cladogram in either the ladder or tree format. As predicted, the textbook diagrams, which contained linear components, were more likely than the cladogram formats to yield explanations of speciation as an anagenic process, a common misconception among students. In contrast, the branching cladogram formats yielded more appropriate explanations concerning levels of ancestry than did the textbook diagrams. Although students with stronger backgrounds in biology did better than those with weaker biology backgrounds, they generally showed the same effects of diagrammatic format. Implications of these results for evolution education and for diagram design more generally are discussed.

Keywords: Diagrammatic format; Cladograms; Evolution; Phylogeny; Tree thinking; Biology education; Historical representations; Reasoning

1. Introduction

Linguistic symbols convey meaning. *Animal keeper*, for example, has a different meaning than *elephant*. More importantly, how these symbols are arranged also affects meaning. For example, *The animal keeper squirted the elephant with water* differs from *The elephant*

Correspondence should be sent to Laura R. Novick, Department of Psychology and Human Development, 552 GPC, 230 Appleton Place, Vanderbilt University, Nashville, TN 37203-5721. E-mail: laura.novick@vanderbilt.edu

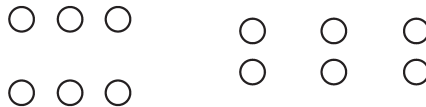
Correspondence may also be sent to Kefyn M. Catley, Department of Biology, 132 Natural Science Building, Western Carolina University, Cullowhee, NC 28723. E-mail: Kcatley@email.wcu.edu

squirting the animal keeper with water with respect to the actor, the means of action, and the recipient of the action. The same holds true for visual elements: Different such symbols privilege different interpretations. For example, Tversky, Zacks, Lee, and Heiser (2000) found that circles tend to be used to represent enclosed spaces. Lines, in contrast, tend to be used to represent physical connections between locations. How these elements are combined and/or arranged also is important. For example, Hurley and Novick (in press) found that two circles connected by a line were more easily interpreted as two objects (e.g., two doctors) that are related in some way (e.g., worked together to learn a new surgical technique) than were two lines connected by a circle.

The Gestalt perceptual principles, such as grouping and good continuation (e.g., Kellman, 2000), also show how combinations or arrangements of visual elements convey meaning. For example, although the left and right sides of Fig. 1A show the same six circles, those on the left are most easily interpreted as two sets of three—perhaps rows of band members marching toward the bottom of the page—whereas those on the right are most easily interpreted as three sets of two—perhaps rows of band members marching to the right. In Fig. 1B, the line drawing at the top can be decomposed into parts in either of the ways shown below the drawing, but the decomposition on the left, which preserves good continuation of lines, is seen as more natural (or better) than the one on the right (e.g., van Tuijl, 1980).

Another constraint that viewers bring to the task of interpreting (i.e., extracting meaning from) arrangements of visual elements is reading order—from left to right and top to bottom in English and most other modern written languages. When there is a natural starting point

A Gestalt principle of grouping



B Gestalt principle of good continuation

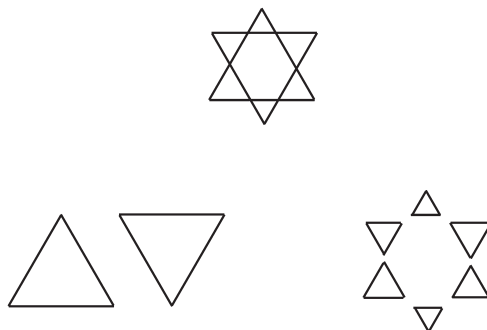


Fig. 1. The Gestalt principles of grouping and good continuation.

in a diagram, viewers start there; otherwise, the order of scanning elements in a diagram tends to be determined by the order of reading written language (e.g., Corter, Nickerson, Tversky, Zahner, & Rho, 2008; Taylor & Tversky, 1992). As Corter et al. note, however, processing diagrams according to reading order and proximity rather than the pattern of connectivity among elements may lead to systematic errors of interpretation. Moreover, the biasing effects of general perceptual principles such as good continuation and reading order may persist even after instruction (e.g., Catley, Novick, & Funk, unpublished data; Corter et al., 2008).

1.1. Diagrammatic depictions of evolutionary history

Diagrams are important in science, technology, engineering, and mathematics (STEM) fields (e.g., Hegarty, Carpenter, & Just, 1991; Lynch, 1990; Novick, 2006a) as well as in the humanities (e.g., McKim, 1980). Yet there has been little attention paid to the issue of how alternative arrangements of visual symbols affect interpretation. Although the answer to this question likely depends on the meaning(s) to be conveyed, there may be commonalities across disciplines when similar higher order relationships are involved. Our focus is on biology diagrams that depict evolutionary relationships among taxa (species, genera, or higher-order groups)—that is, the tree of life. Because these diagrams represent historical data, our results may have implications for representing such data more generally (e.g., in linguistics, geology, world history).

There is a long history of diagrammatic representation in evolutionary biology (e.g., Clark, 2001; Gould, 1995), and a wide variety of such diagrams appear in textbooks at the high school and college levels (Catley & Novick, 2008). Recently, there have been numerous calls by biology educators to incorporate *tree thinking* into high school and college curricula (e.g., Baum, Smith, & Donovan, 2005; Catley, 2006; Goldsmith, 2003). Tree thinking involves the ability to (a) interpret and extract information about evolutionary history from phylogenetic trees and (b) use those diagrams to organize knowledge of biodiversity and make inferences to support one's decisions and actions. Yet there are few analyses of how the format of these diagrams may affect the interpretations made by users and little experimental research on this issue. We present such an analysis here, followed by the results of a study designed to test these hypotheses. At the end, we consider implications of our findings for diagram design more generally.

Diagrams that depict evolutionary relationships among taxa also necessarily depict hypotheses about evolutionary history—that is, the order in which taxa arose on Earth. In addition, they may convey information about *how* new species arose. Thus, we begin our discussion with the distinction between two hypotheses concerning speciation. A persistent misconception in people's understanding of evolution is that new species arise through a transformational process known as anagenesis (e.g., Bishop & Anderson, 1990; Catley, Novick, & Shade, in press; Shtulman, 2006). This process specifies that one species undergoes changes that lead it to turn into another species, at which point the original species ceases to exist. There is little evidence to support this process of speciation. Rather, evidence supports the hypothesis that speciation results from the process of cladogenesis,

whereby new species are formed when a parent species is split into two populations. If these populations remain isolated from each other over a long period of time, selection among individuals will continue separately in each group, driven by differential pressures of the two local environments. Sometimes two new species result; other times the parental species may remain intact. Only cladogenesis can explain the increase in the number of species over time. Put succinctly, anagenesis is a linear process of succession, whereas cladogenesis involves branching or splitting.

It is fairly simple to design diagrams that seem to privilege the interpretation of speciation as an anagenic or cladogenic process. Consider Fig. 2A, which shows a continuous line with dots on it representing three species in the genus *Homo*. Just as one envisions the forward march of current time leading the caterpillar to turn into a chrysalis and the chrysalis to become a butterfly, this diagram seems to suggest that *H. habilis* turned into *H. erectus* and *H. erectus* became *H. sapiens* over the course of evolutionary time. That is, Fig. 2A seems to privilege the interpretation of speciation as an anagenic process. Now consider Fig. 2B, which depicts the evolutionary relationships among these taxa in a branching diagram (specifically, a cladogram in the tree format). The first branching event, at the bottom of the diagram, leads to *H. habilis* and to the lineage from which *H. erectus* and *H. sapiens* later arose. A second branching event separates *H. erectus* and *H. sapiens*. This diagram seems to privilege a cladogenic interpretation of speciation.

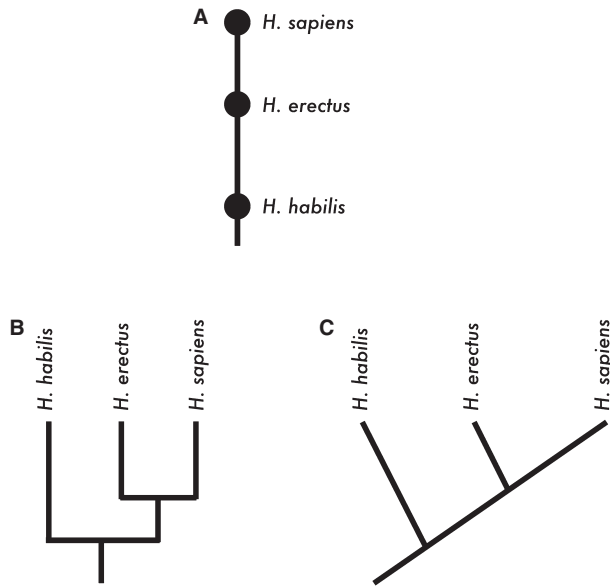


Fig. 2. Alternative diagrammatic depictions of the evolutionary relationships among *H. sapiens*, *H. erectus*, and *H. habilis*. These depictions may suggest that speciation is a process of (A) anagenesis, (B) cladogenesis, or (C) perhaps some combination of the two. The diagrams in (B) and (C) are cladograms in the tree and ladder formats, respectively.

It is important to note that these diagrams privilege (we hypothesize) rather than compel these alternative interpretations. Indeed, one can interpret each diagram in other ways. For example, the diagram in Fig. 2A may simply show that *H. habilis* predates *H. erectus*, which predates *H. sapiens*, in the same way that a historical timeline shows Barack Obama to be the current president of the United States, George W. Bush to be the immediately preceding president, and Bill Clinton to be the president before Bush. The diagram in Fig. 2B, on the other hand, may be interpreted to show that *H. habilis* on the left evolved into *H. erectus* and *H. sapiens* on the right, to which it is directly connected.

Fig. 2C represents a potentially intermediate case. This (ladder format) cladogram is isomorphic to the cladogram in Fig. 2B, but because of the Gestalt principle of good continuation (see Novick & Catley, 2007), the continuous diagonal line at the bottom of the figure and the progression of “rungs” leading to the top of the diagonal could sway viewers to interpret the relationships as involving anagenesis rather than cladogenesis.

Catley and Novick’s (2008) survey of 21 contemporary high school and college introductory biology textbooks found both types of cladograms as well as noncladogenic representations of evolutionary relationships. In the high school textbooks, 53% of the evolutionary diagrams were cladograms and 47% were noncladogenic representations. In the college-level texts geared for nonbiology versus biology majors, the percentage of cladograms increased to 65% and 83%, respectively.

Because the noncladogenic depictions in textbooks are a heterogeneous group, it is most relevant here to consider the prevalence of linear depictions that may suggest anagenesis (i.e., those like Fig. 2A). In particular, it is important to know whether such depictions are isolated in a few textbooks or are found more broadly. Catley and Novick (2008) reported that such diagrams were found in 67% of the high school biology textbooks they surveyed, 50% of the college introductory texts for nonbiology majors, and 83% of the college introductory texts for biology majors. Most of these diagrams depicted either *H. sapiens* in the context of other hominid species (*Homo* and/or *Australopithecus*) and possibly also other primates or relationships among extinct and extant horse taxa.

Catley (in press) investigated college students’ interpretations of evolutionary history represented in two diagrams containing linear components suggestive of anagenesis: one involving hominid taxa and the other equine taxa. For each diagram, subjects were asked to describe the evolutionary relationships among three taxa that were arranged in a line. For example, the hominid diagram contained the component shown in Fig. 2A, and subjects were asked what the single branch connecting *H. habilis*, *H. erectus*, and *H. sapiens* conveys about the evolutionary relationship between *H. habilis* and *H. sapiens*. Subjects’ answers to the open-ended question for each diagram were content coded. Of particular interest here is the relative frequency of the categories reflecting anagenic thinking (e.g., responses indicating that *Eohippus* changed over time to become *Equus* or that *H. habilis* evolved into *H. erectus*, which evolved into *H. sapiens*) versus ancestry relationships (e.g., stating that *Equus* descended from *Eohippus* or that *H. habilis* is an ancestor of *H. sapiens*). Catley et al.’s analysis revealed that 54% of subjects gave responses that used anagenic language, whereas only 25% gave responses that talked about the relationships using the neutral language of ancestors and descendants.

1.2. Overview of the present study

Catley's (in press) results are consistent with our hypothesis that linear components like that shown in Fig. 2A privilege interpretation of speciation as an anagenic process. The results are not conclusive, however, because there was no comparison to students' descriptions of relationships on branching diagrams. It may be that college students use anagenic language to describe evolution regardless of the type of diagram. Novick and Catley (unpublished data) compared college students' performance on a variety of tree-thinking questions when the evolutionary relationships were depicted in tree- and ladder-formatted cladograms. They found that subjects were more accurate and gave higher quality justifications focusing on levels of ancestry with the tree format, but they did not code anagenic responses.

In the present study, we compared students' interpretations of the two textbook diagrams used by Catley (in press) to their interpretations of cladogenic depictions of the relationships among the same taxa. For each set of taxa, we constructed cladograms in both the tree (Fig. 2B) and ladder (Fig. 2C) formats based on current scientific evidence concerning the evolutionary history of those taxa. We asked several questions about each set of diagrams that we expected might reveal different interpretations (e.g., anagenic vs. ancestral) of the alternative depictions of evolutionary history.

Our primary hypothesis is that for each set of taxa, the textbook diagram, with its linear components, will yield more anagenic responses than the two cladograms. If there is a difference in anagenic responding between the two cladograms, it will be in the direction of more anagenic responses for the ladder format than the tree format. We correspondingly predict that responses indicating an appropriate interpretation of evolutionary history in terms of levels of ancestry will be more prevalent with the cladogram formats than the textbook diagrams. The feature of levels is a core characteristic of hierarchical diagrams (Novick & Hurley, 2001) and one with which college students are well acquainted (Novick, 2001, 2006b). The tree format may yield more such responses than the ladder format. A third hypothesis is that subjects' misinterpretation of the hierarchical structure of cladograms in the ladder format (Novick & Catley, 2007) will lead them to miscount in a specific way the number of branches leading from a particular point on a ladder (described later). In contrast, there is no reason for subjects to encounter difficulty counting branches in either a tree format cladogram or the textbook diagrams.

We divided our subjects into two groups based on their background in biology. Although Catley (in press) reported their results for students' interpretations of evolutionary relationships depicted in the two textbook diagrams based on a single heterogeneous sample of college students, our research on students' interpretations of cladograms (Novick & Catley, 2007, unpublished data) has found better understanding among those with stronger backgrounds in biology. Although we expect stronger background students to have higher accuracy scores on our questions and to provide higher quality justifications focusing on levels of ancestry, we do not expect them to be immune to diagram effects. Just as stronger background students, like their weaker background peers, have more difficulty extracting the correct hierarchical structure from ladder than tree cladograms (Novick & Catley, 2007, unpublished data), despite their overall superior performance, we expect them likewise to

be led down the garden path to anagenic interpretations of evolutionary history by the linear depictions in the textbook diagrams. Similarly, we predict that both groups will miscount the lines leading from a certain location on the ladder.

2. Method

2.1. Subjects

The subjects were 108 students from Vanderbilt University who were recruited during two consecutive fall semesters. The students participated in partial fulfillment of course requirements for introductory psychology (10 females, 5 males) or evolutionary biology (21 females, 30 males), for extra credit in the psychology (21 females, 2 males) or education (15 females, 3 males) class from which they were recruited, or for pay (1 male).

Subjects completed a background information questionnaire on which they were asked if they had taken any of 12 primarily organismal biology and three relevant (historical) geology courses. Subjects were assigned to the stronger background group if they had taken at least the two-semester introductory biology sequence required for biology majors and pre-med students. On average, the 54 stronger background students (23 females, 31 males) had taken 3.56 semesters of biology (or relevant geology) classes (of those listed on our questionnaire). The remaining 54 students (44 females, 10 males), who were assigned to the weaker background group, typically had little exposure to biology ($M = 0.45$ semesters). There is nearly an 8:1 difference in coursework between the two groups.

2.2. Materials

For counterbalancing purposes, we selected three diagrams from contemporary high school and college biology textbooks—the hominid and horse diagrams previously mentioned and a diagram involving primates. The hominid and horse diagrams were chosen because they include linear depictions of evolutionary history. Catley and Novick (2008) found that most such depictions in textbooks involve these two sets of taxa. Because the primate diagram did not contain linear depictions of evolutionary history, we restrict further discussion to the hominid and horse diagrams; only they are relevant to determining the effects of linear versus branching depictions of evolutionary history.

The hominid textbook diagram, which we found in two high school biology books (Johnson, 1998; Johnson & Raven, 2001), depicts relationships among *H. sapiens* (modern humans), extinct members of the genus *Homo*, and extinct members of the closely related genus *Australopithecus*. Catley (in press) found that this diagram leads some students to an anagenic interpretation of the evolution of at least some of the taxa. For comparison purposes, we created two new diagrams in which the evolutionary relationships among these taxa were depicted in a tree cladogram and a ladder cladogram. The cladograms were adapted from the one provided in Foley (1987). Fig. 3 shows the textbook, ladder, and tree diagrams.

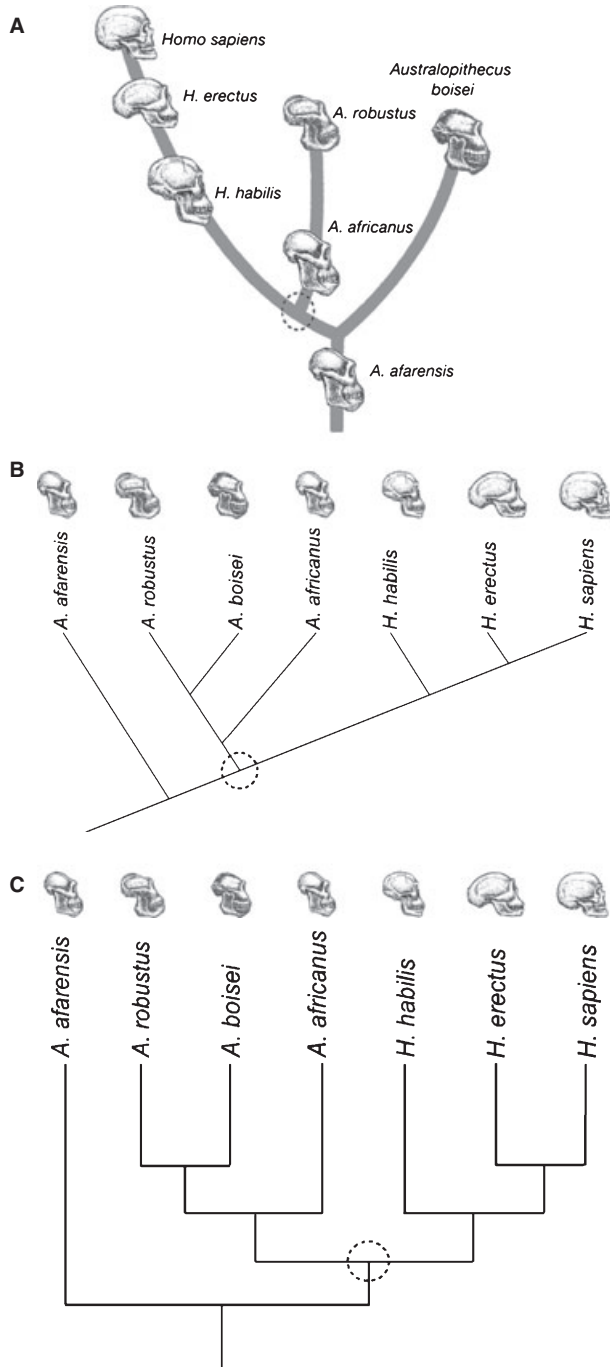


Fig. 3. (A) Textbook, (B) ladder, and (C) tree diagrams for the hominid taxa. The textbook diagram is from Johnson and Raven (2001), p. 308, fig. 14-7. Copyright 2001 by Holt, Rinehart, and Winston. Adapted with permission.

The horse textbook diagram depicts relationships among *Equus*, the modern horse, and several extinct relatives. We found this diagram in the book used for the human biology class at Vanderbilt University (Chiras, 2002). Like the hominid textbook diagram, this diagram leads some students to interpret the evolution of at least some of the taxa as arising through anagenesis (Catley, in press). The corresponding tree and ladder cladograms were adapted from the one provided in Evander (1989). Fig. 4 shows each diagram.

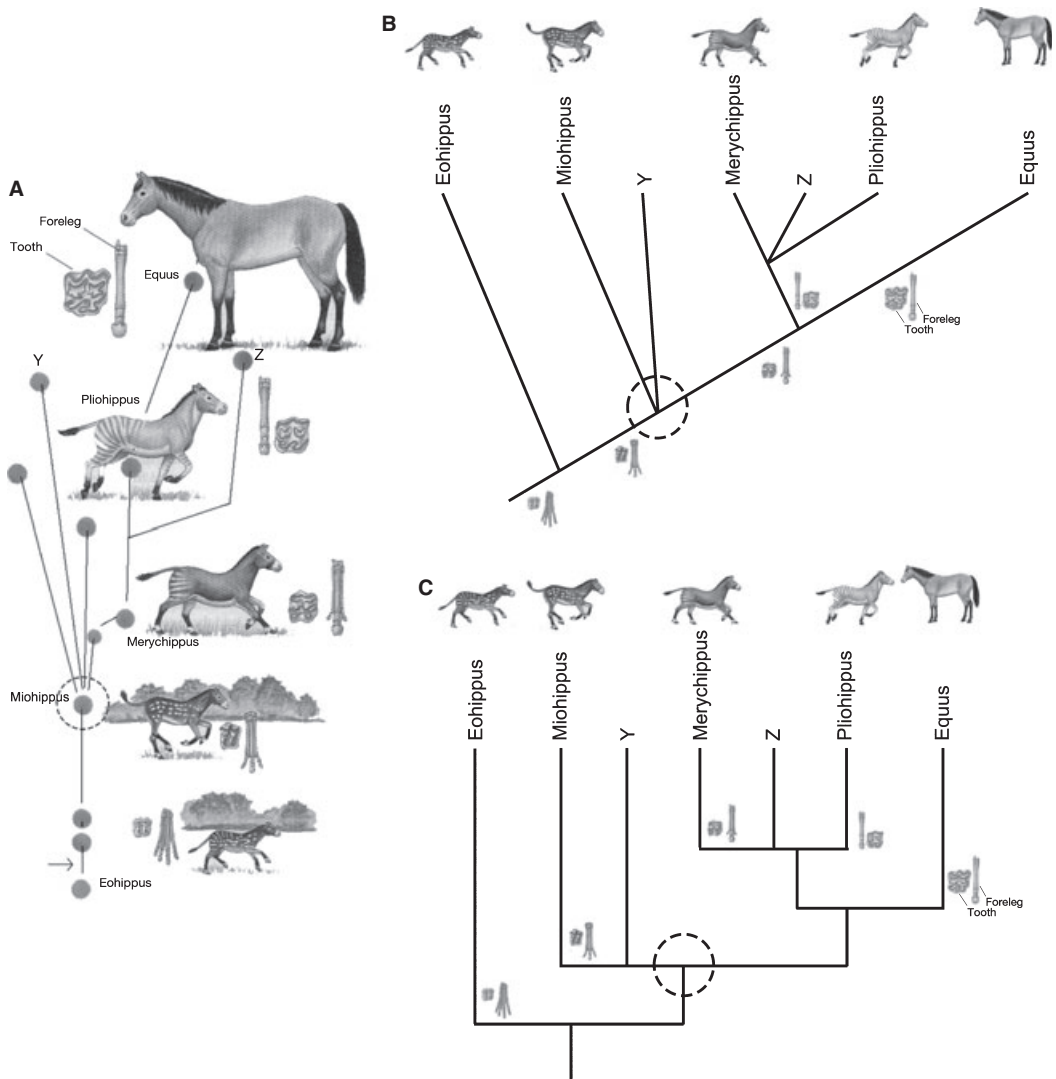


Fig. 4. (A) Textbook, (B) ladder, and (C) tree diagrams for the horse taxa. The textbook diagram is from Chiras (2002), p. 501, fig. 21-15. Copyright 2002 by Jones and Bartlett. Adapted with permission.

As discussed in Novick and Catley (2007), the tree and ladder cladogram formats are isomorphic. Unfortunately, it is not possible to construct cladograms that are unequivocally isomorphic to the linear depictions of evolutionary history in the textbook diagrams. In cladograms, taxa are depicted only at the terminal branches of the diagram, whereas noncladogenic diagrams allow taxa to be depicted at internal nodes as well (which can lead to the linear depictions seen in the textbook diagrams used in the present study). Nevertheless, it is possible to create questions about corresponding parts of cladogenic and noncladogenic diagrams for which subjects can provide comparable answers, as discussed earlier. Of course, the diagrammatic formats themselves could still bias interpretation in one way or another, as we hypothesize. With just two exceptions, we created such equivalent questions for each set of diagrams, and those are the questions whose responses we discuss in this article. All questions are given in the Appendix.

We wrote four questions for the hominid diagrams. The first two were identical for all three diagrams. The third question asked about the relationship between *A. robustus* and the taxon to which it is directly connected. That taxon is different in the textbook diagram versus the two cladograms (see Fig. 3), so the question was phrased accordingly for each diagram. The fourth question asked about a particular taxon that plays noncorresponding roles in the textbook diagram versus in the cladograms. Therefore, we will not present the results for that question. We wrote four questions about the horse taxa that were identical across diagrams. A fifth question was asked about the textbook diagram only, about a portion of that diagram that had no corresponding part in the cladograms. We discuss the results for the four common questions.

2.3. Design and procedure

One independent variable was diagram format. Subjects received three diagrams, each drawn in a different format—textbook, ladder cladogram, and tree cladogram. The assignment of the three sets of taxa—hominid, horse, primate—to diagram formats was counterbalanced across subjects. For each of the six possible combinations of taxa and formats, the three stimulus pages could be arranged in six different orders, yielding 36 different booklets that were randomly distributed to subjects. For each set of taxa, diagram format was manipulated between subjects. The second independent variable, which also varied between subjects, was weaker versus stronger background in biology. Due to the counterbalancing, 16–20 subjects in each biology background group received each diagram.

The materials for this experiment were presented as one of several booklets that subjects completed at their own pace in a single session that lasted approximately 50–90 min. These booklets constituted data collection for separate experiments that addressed distinct conceptual and theoretical issues. The final page in the folder was a background information questionnaire that included the coursework question needed to assign subjects to biology background groups. The results of the other studies will be reported elsewhere. Most subjects (both weaker and stronger background) participated in groups, although occasionally only one person signed up or showed up for the experimental session. All subjects completed the booklets either in a large lab room with

individual tables set up for paper-and-pencil data collection that looks like a classroom or in an actual classroom.

3. Results

3.1. Coding the written responses

Each free response answer received a code based on the content of the response. Because our goal was to determine (a) the extent to which students have components of a correct understanding of evolutionary history (especially levels of ancestry) and (b) the extent to which they view evolution as an anagenic process, we only distinguished responses that shed light on these issues. Development of the coding scheme for each question was guided by our prior research in this area (Novick & Catley, unpublished data) and by the responses most often provided by subjects. Subjects received a single code for each question. The codes were ranked according to level of sophistication, with 2–4 codes for each question receiving quality scores of 1, 0.5, or 0.25. Subjects' responses that did not fit into these coding categories received a quality score of 0 and were coded as either *anagenesis* or *other*. The codes, their definitions, and their associated quality scores are described prior to the relevant analyses. In addition, all code definitions and the questions to which each code applies are given in Table 1.

The second author and an undergraduate research assistant coded the data from 20 of the 86 subjects who participated during the fall 2007 semester for training purposes. Then they independently coded the responses from the remaining 66 subjects. The coding was done blind to diagram condition. For the questions reported here, the two coders agreed on the appropriate code for 84% of subjects' justifications (range of 73–92% across questions). Discrepancies were resolved by the first author, who then coded the data (blind to diagram condition) from the 22 subjects who participated during the fall 2008 semester.¹

3.2. Overview of the analyses

The objective questions were scored as either correct (1) or incorrect (0). As noted, the content codes for the open-ended questions received a quality score ranging from 0 to 1. Question accuracy and evidence quality were determined by the third author, who is an evolutionary biologist. A diagram format (textbook vs. ladder vs. tree) X biology background (stronger vs. weaker) between-subjects analysis of variance (ANOVA) was conducted for each dependent variable. An alpha level of 0.05 was the criterion for statistical significance. Effect size is reported as partial η^2 , with 0.01 being the minimum value for a small effect, 0.09 the minimum for a medium-sized effect, and 0.25 the minimum for a large effect.

In the next section, we report the results concerning anagenesis responses for both sets of taxa. Then we report the results for the evolutionary distance questions. We asked one such question about each set of taxa. In the final two sections, we report the results for the remaining questions that were idiosyncratic to the hominid and horse diagrams. The results

Table 1

Codes used to categorize subjects' responses to the open-ended evidence questions, along with the quality scores assigned to those codes and the questions to which the codes apply

Code (Score)	Definition (Questions to Which Code Applies)
<i>MRCA</i> (1)	The taxa share a more recent common ancestor; must say <i>MRCA</i> or must clearly convey that the shared ancestor is the most recent; taxa constitute a clade (all questions)
<i>DIVERGENCE</i> (0.5)	Mention splitting/diverging/branching through the evolutionary process; must say <i>split</i> or <i>diverge</i> or <i>branch</i> , but cannot just say the word; must convey the idea of multiple branches coming off from a single point (Hominid Q1; Horse Q1, Q2, Q4)
<i>ANCESTOR</i> (0.5)	The taxa share a common ancestor (Hominid Q2, Q3; Horse Q2, Q3)
<i>SPECIATION</i> (0.5)	Speciation, the formation of a new species or taxon (Hominid Q2)
<i>TIME INFERENCE</i> (0.5)	Inference based on time: As the bone is novel in <i>Miohippus</i> , it could not be present in <i>Eohippus</i> , which came earlier; but it could be present in <i>Pliohippus</i> , which came later (Horse Q4)
<i>RELATED</i> (0.25)	Taxa are very closely related; closest evolutionarily; must mention degree of relationship (Hominid Q2, Q3; Horse Q2, Q3, Q4)
<i>ANAGENESIS</i> (0)	One taxon became or evolved into or evolved from another taxon (all questions)
<i>OTHER</i> (0)	Any other explanation (all questions)

for all ANOVAS are shown in Table 2, and the means by diagram condition and biology background for each measure are shown in Table 3.

3.3. Anagenesis responses

We computed a composite measure for each set of taxa that was the proportion of questions (three for the hominid diagrams, four for the horse diagrams) for which each subject received the anagenesis code. Following Catley (in press), this code was given whenever subjects talked about one taxon becoming, evolving into, or evolving from another taxon. Example anagenic responses include the following: (a) “*A. africanus* evolved into *A. robustus*,” (b) “because *H. sapiens* is the prestige to *H. erectus*. *H. sapiens* forms into *H. erectus*,” (c) “*A. africanus* became *A. robustus*,” and (d) “*Miohippus* directly evolved from *Eohippus*. *Pliohippus* evolved from *Merychippus*.”

For the hominid diagrams, the ANOVA yielded significant main effects of both diagram condition and biology background, with no interaction. As we predicted, anagenesis responses were much more prevalent for the linear textbook diagram than for the two cladograms, and they were also more prevalent for the ladder cladogram than the tree cladogram. Also as predicted, anagenesis responses were more prevalent for students with weaker than stronger backgrounds in biology. The mean anagenesis score for weaker background students for the textbook diagram was 0.33, indicating that on average each such student gave a response suggesting anagenesis for one of the three questions for this diagram.

Table 2
Results of the statistical analyses (two-factor between-subjects ANOVAS) for each variable

Measure/ Questions Included	Main Effect of Diagram Type	Main Effect of Biology Background	Interaction
Anagenesis			
Hominid Qs 1–3 evidence	$F(2, 102) = 13.42, p < .001,$ partial $\eta^2 = 0.21, MSE = 0.03$	$F(1, 102) = 15.74, p < .001,$ partial $\eta^2 = 0.13$	$F(2, 102) = 0.89, ns,$ partial $\eta^2 = 0.02$
Horse Qs 1–4 evidence	$F(2, 102) = 5.57, p < .01,$ partial $\eta^2 = 0.10, MSE = 0.02$	$F(1, 102) = 1.03, ns,$ partial $\eta^2 = 0.01$	$F(2, 102) = 0.05, ns,$ partial $\eta^2 = 0.00$
Evolutionary distance			
Hominid Q1 accuracy and evidence	$F(2, 102) = 10.82, p < .001,$ partial $\eta^2 = 0.17, MSE = 0.07$	$F(1, 102) = 31.29, p < .001,$ partial $\eta^2 = 0.23$	$F(2, 102) = 6.48, p < .01,$ partial $\eta^2 = 0.11$
Horse Q1 accuracy and evidence	$F(2, 102) = 23.11, p < .001,$ partial $\eta^2 = 0.31, MSE = 0.09$	$F(1, 102) = 17.18, p < .001,$ partial $\eta^2 = 0.14$	$F(2, 102) = 1.91, ns,$ partial $\eta^2 = 0.04$
Shared ancestry			
Hominid Q2, Q3 evidence	$F(2, 102) = 1.55, ns,$ partial $\eta^2 = 0.03, MSE = 0.04$	$F(1, 102) = 37.71, p < .001,$ partial $\eta^2 = 0.27$	$F(2, 102) = 1.15, ns,$ partial $\eta^2 = 0.02$
Horse Q2, Q3, Q4 evidence	$F(2, 102) = 6.68, p < .01,$ partial $\eta^2 = 0.12, MSE = 0.04$	$F(1, 102) = 58.69, p < .001,$ partial $\eta^2 = 0.37$	$F(2, 102) = 4.80, p < .02,$ partial $\eta^2 = 0.09$
Good continuation			
Horse Q2 accuracy	$F(2, 102) = 13.41, p < .001,$ partial $\eta^2 = 0.21, MSE = 0.17$	$F(1, 102) = 2.75, ns,$ partial $\eta^2 = 0.03$	$F(2, 102) = 0.99, ns,$ partial $\eta^2 = 0.02$
Other			
Horse Q4 accuracy	$F(2, 102) = 4.83, p < .02,$ partial $\eta^2 = 0.09, MSE = 0.22$	$F(1, 102) = 8.43, p < .01,$ partial $\eta^2 = 0.08$	$F(2, 102) = 0.01, ns,$ partial $\eta^2 = 0.00$

Table 3
Mean scores for each measure as a function of type of diagram and biology background

Measure/Questions	Type of Diagram			Biology Background	
	Tree	Ladder	Textbook	Stronger	Weaker
Anagenesis					
Hominid Q1, Q2, Q3	0.04 (0.11)	0.12 (0.18)	0.25 (0.26)	0.07 (0.15)	0.20 (0.24)
Horse Q1, Q2, Q3, Q4	0.02 (0.07)	0.04 (0.14)	0.14 (0.22)	0.05 (0.13)	0.08 (0.19)
Evolutionary distance					
Hominid Q1	0.60 (0.30)	0.53 (0.33)	0.33 (0.30)	0.63 (0.34)	0.35 (0.25)
Horse Q1	0.63 (0.31)	0.46 (0.39)	0.15 (0.24)	0.54 (0.38)	0.28 (0.31)
Shared ancestry					
Hominid Q2, Q3	0.23 (0.24)	0.27 (0.25)	0.21 (0.24)	0.36 (0.26)	0.12 (0.13)
Horse Q2, Q3, Q4	0.37 (0.32)	0.35 (0.27)	0.20 (0.17)	0.46 (0.27)	0.15 (0.15)
Good continuation					
Horse Q2 accuracy	0.78 (0.42)	0.40 (0.50)	0.89 (0.31)	0.76 (0.43)	0.63 (0.49)
Other					
Horse Q4 accuracy	0.64 (0.49)	0.40 (0.50)	0.73 (0.45)	0.72 (0.45)	0.46 (0.50)

Note. Standard deviations are given in parentheses.

For the horse diagrams, the ANOVA yielded only a main effect of diagram condition, which showed a similar pattern as was found for the hominid diagrams: Anagenesis responses were much more prevalent for the linear textbook diagram than for the cladograms. Overall, anagenesis responses were half as prevalent for the horse diagrams as for the hominid diagrams, suggesting that students are less willing to acknowledge the coexistence of multiple hominid species as multiple equine species. We will return to this difference in the discussion section.

3.4. Evolutionary distance questions

The first question for both sets of taxa was an evolutionary distance question (Novick & Catley, unpublished data) in which subjects were given a reference taxon (e.g., *H. erectus* for the hominid diagrams) and asked which of two other taxa (e.g., *H. habilis* or *H. sapiens*) is the closest evolutionary relation to that taxon. They were also asked to provide evidence to support their answer. This question required subjects to interpret the structural relationships (i.e., patterns of connectedness) among the taxa rather than simply the proximity of the taxa on the diagram. The correct answer (score of 1) is the comparison taxon that shares a more recent common ancestor (MRCA) with the reference taxon: *H. sapiens* for the hominid diagrams because it shares a MRCA with *H. erectus* than does *H. habilis*, and *Equus* for the horse diagrams because it shares a MRCA with *Merychippus* than does *Miohippus*.

Three codes were used to assess subjects' justifications in terms of their understanding of most recent common ancestry, the critical concept in understanding evolutionary relationship. The most sophisticated response was to mention that the reference taxon shares a MRCA with the chosen taxon or that the reference taxon and the chosen taxon form a clade (a group consisting of the most recent common ancestor of the group and all descendants of that ancestor). Such responses received a quality score of 1. Examples include the following: (a) "sapiens and erectus have a common ancestor more recently than habilis," (b) "sapiens, they form a clade & have more common ancestors," (c) "have a more recent common ancestor," and (d) "Equus and Merychippus share a more recent common ancestor that [sic] Miohippus and Merychippus."

The divergence code, which was next in terms of quality of reasoning, was given if subjects mentioned splitting, branching, or diverging through the evolutionary process. Such responses received a quality score of 0.5. Examples include the following: (a) "These two diverged the most recently. *H. habilis* diverged from the other two at an earlier time," (b) "it's part of the same branch as *H. erectus* and the split between these two is later than erectus and habilis," and (c) "Equus [sic] and Merychippus branch from common ancestor & both undergo less changes."

The remaining responses referred to a variety of factors such as the number of common characteristics between taxa, taxa being connected or linked on the diagram, physical distance in space between the taxon labels, and anagenesis (discussed in the previous section). All such responses received a quality score of 0. Examples include the following: (a) "The size and shape of *H. habilis* looks more similar than *H. sapiens*," (b) "The branches are smaller leading to the Merychippus from the Miohippus taxon," (c) "Equus is the closest because

the lines connected it to *Merychippus* are straighter, indicating less evolutionary change,” and (d) “*Miohippus* is only one step from *Merychippus*, while *Equus* is two steps away.”

Following Novick and Catley (unpublished data), subjects received a composite score that was the average of their scores for accuracy and evidence quality. The results of the ANOVA on these scores for the hominid diagrams yielded significant main effects of diagram condition and biology background and a significant interaction between these factors. Stronger background subjects performed very well when reasoning from the tree and ladder cladograms ($M = 0.78$ for both). Their performance with the textbook diagram ($M = 0.34$), however, was much worse and was similar to that of weaker background subjects in all three conditions ($M_s = 0.42, 0.33,$ and 0.31 , respectively). Thus, the interaction indicates that the diagram condition effect is primarily due to the responses of the stronger background subjects.

The ANOVA on the composite scores for the horse diagrams yielded main effects of both factors but no interaction. As for the evolutionary distance question for the hominid diagrams, subjects performed worst when reasoning from the textbook diagram. They did better with the ladder cladogram and better still with the tree cladogram. As expected, stronger background subjects received higher scores than weaker background subjects.

3.5. Remaining hominid questions

In this section, we present results concerning students’ understanding of ancestry as reflected in their responses to the second and third questions for the hominid diagrams. The second question asked about a circled point on the diagram where there is a split into two separate branches. The third question asked about two taxa that are directly connected on the diagram (*A. robustus* and *A. africanus* for the textbook diagram and *A. robustus* and *A. boisei* for the cladograms). For both questions, subjects were asked to interpret the indicated relationships. Their responses for each question were coded in a similar manner to that described for the evolutionary distance questions. Some additional codes were used for these questions, guided by the kinds of justifications subjects gave.

For both questions, as for the evolutionary distance questions, the best response was to appeal to most recent common ancestry (quality score of 1). Examples include the following: (a) “*Homo sapiens*, *H. erectus*, and *H. habilis* share a common ancestor not shared by *A. africanus* and *A. robustus*” (Question 2), (b) “This split represents the point in time where a new characteristic emerged, splitting the line into two—one line for each characteristic. It also represents the most recent common ancestor or the two sister clades (one being *A. robustus*, *A. boisei*, and *A. africanus*. The other being *H. habilis*, *H. erectus*, and *H. sapiens*.)” (Question 2), and (c) “They share a (most) recent common ancestor (they are the only two taxa descendants of this common ancestor)” (Question 3).

A new code for each question, which received a quality score of 0.5, was to talk about shared ancestry without specifying the critical concept of a *most recent* common ancestor. Example responses include the following: (a) “The common ancestor at this node evolved into two lineages most likely due to some kind of selective pressure” (Question 2), (b) “They must share many characteristics, and they must have evolved from a common

ancestor” (Question 3), and (c) “Evolutionarily, they are related to same common ancestor” (Question 3). Another new code for Question 2 that received a quality score of 0.5 was to talk about speciation (i.e., the formation of a new species or taxon). Example responses include the following: (a) “Some adaptation, for better or worse, presented a new taxa within this specific evolutionary taxa,” (b) “Something led to the formation of a new species,” and (c) “It’s a point where two different taxa can be identified by their unique characteristics.”

Finally, a new code, applicable to both questions, was given when subjects talked about taxa being very closely related or sharing unique characteristics. Such responses received a quality score of 0.25. Examples include the following: (a) “marks big split between different groups—*A. robustus*, *A. boisei*, & *A. africanus* all more closely related than to *H. habilis*, *H. erectus*, & *H. sapiens* (closely related)” (Question 2); (b) “These two taxa share a characteristic the other lineages do not. They are more closely related to each other than to any other taxa” (Question 3); and (c) “they share a lot of characteristics that are not shared with others in the *A.* taxon” (Question 3).

The ANOVA on the average evidence quality scores across the two questions yielded only a main effect of biology background, with stronger background students predictably doing better than weaker background students. Unlike for the evolutionary distance questions, students’ understanding of evolutionary history, as indicated by their justifications for these two questions, was comparable for the three diagram formats. We suspect that the critical difference between the questions is that for these questions subjects only had to consider relationships at a single point on the diagram, whereas for the evolutionary distance questions they had to compare multiple relationships across separate parts of the diagram. Diagrammatic format may exert a stronger effect on performance as task difficulty increases.

3.6. Remaining horse questions

3.6.1. Overview

The second question for the horse diagrams asked subjects how many lines emanate from the circled location on the diagrams and then to explain the relationship among these lines. The third question noted that the lines leading from three particular taxa meet at a common place and asked subjects to explain the relationship among these taxa. Multiple lines branching from a single location indicates that the taxa form a polytomy—a set of three or more taxa that share a most recent common ancestor but that cannot be resolved into finer grained groups, such that two taxa are more closely related to each other than they are to the third taxon. The fourth question stated that *Miohippus* has a particular character and asked subjects whether *Eohippus* or *Pliohippus* was more likely to also have that character and to provide evidence to support their inference.

As for the second and third questions for the hominid diagrams, the best supporting evidence for these three questions is to appeal to most recent common ancestry. Accordingly, we averaged the evidence quality scores across these three questions to provide a composite indicator of students’ understanding of ancestry. We discuss the results for

that measure first, followed by the results for the accuracy scores for the second and fourth questions.

3.6.2. Understanding of ancestry

The MRCA code applied to all three questions and received a quality score of 1. The divergence code (score of 0.5) applied to questions 2 and 4. The shared ancestry code (score of 0.5) applied to questions 2 and 3. The closely related code (score of 0.25) applied to all three questions. One new code, which received a quality score of 0.5, was used for Question 4 to account for a unique pattern of reasoning observed for that question. Some subjects supported their inference based on the semantics of the question and their knowledge that evolution occurs over an extended time period. These subjects reasoned that because the question stated that the ear bone was novel in *Miohippus*, it could not be present in *Eohippus* because that taxon came before *Miohippus*. The bone could be present in *Pliohippus*, however, because that taxon arose after *Miohippus*. Example responses include the following: (a) “Since *Eohippus* evolved earlier than *Miohippus*, and if it is assumed that *Eohippus* does not have this bone, then the bone evolved after *Eohippus* and would thus be present in *Pliohippus* because it evolved after *Miohippus*” and (b) “newer evolutionary characteristic—can’t track backwards.” All other responses to these three questions received a quality score of 0.

The ANOVA on the average evidence quality scores yielded significant main effects of diagram type and biology background and a significant interaction between these factors. The pattern of means is familiar: Subjects did better with the cladograms than with the textbook diagram, and stronger background students did better than weaker background students. As for the evolutionary distance question for the hominid diagrams, the interaction indicated that the diagram type effect was driven by the responses of the stronger background students (M s of 0.56, 0.53, and 0.27 for the tree, ladder, and textbook diagrams, respectively); the weaker background students did similarly poorly for all three diagram types (M s of 0.14, 0.19, and 0.13, respectively).

3.6.3. Good continuation

Novick and Catley (2007, unpublished data) found that, due to the Gestalt principle of good continuation, subjects encode the long slanted line at the base of a ladder cladogram as a single entity and lines that intersect that line as separate entities. Thus, for horse Question 2 we expected subjects in the present study to say that two lines extend from the circled location on the ladder. The correct answer, however, as should be evident from the tree cladogram, is three. In contrast, there is no reason for subjects to have difficulty counting the lines for either the tree cladogram (three) or the textbook diagram (four). Thus, for this question, we predicted worse performance for the ladder cladogram, regardless of biology background, than for the other two diagrams.

The results of the ANOVA supported this hypothesis. The significant main effect of diagram condition indicated much higher accuracy for the tree cladogram and the textbook diagram than for the ladder cladogram. As expected, the modal response for the ladder was *two lines* (57% of subjects). No other effects were significant, indicating that both weaker and

stronger background subjects misinterpreted the ladder cladogram in accordance with the Gestalt principle of good continuation.

3.6.4. Question 4 accuracy

Finally, we analyzed accuracy for Question 4. The significant main effect of biology background predictably showed better performance for stronger than weaker background subjects. However, the pattern of means for the significant diagram condition effect was puzzling: Subjects more often correctly inferred that *Pliohippus* was more likely than *Eohippus* to share the novel-shaped ear bone possessed by *Miohippus* for the tree cladogram and the textbook diagram than for the ladder cladogram. We are unsure how to explain this pattern of means.

4. Discussion

The overarching issue considered in this article is that different arrangements of visual elements privilege different interpretations of the relationships among the referents of those elements. We explored this issue using diagrams depicting evolutionary history, for which we hypothesized that different arrangements would lead to inappropriate versus appropriate interpretations of how speciation occurs. In the initial sections below, we discuss our predictions concerning the results of our experiment. Next, we consider implications of these results for evolution education. Finally, we discuss implications for diagram design more generally.

4.1. Effects of diagram format on the misconception of speciation as anagenesis

Our primary hypothesis was that linear depictions of evolutionary history (e.g., Fig. 2A) are more likely to lead to anagenic interpretations of speciation than are branching depictions (e.g., Fig. 2B,C). This prediction was supported for both the hominid and horse sets of taxa, as the textbook diagrams ($M = 0.19$) were more likely than the cladograms (M s of 0.08 and 0.03, respectively, for the ladder and tree formats) to evoke this misconception of evolution that has been found in previous studies using nondiagrammatic tasks (e.g., Bishop & Anderson, 1990; Shtulman, 2006). Thus, part of the answer to overcoming this persistent misconception would seem to be to provide students with only cladogenic representations of evolutionary history. Of the two cladogram formats, the tree was less likely than the ladder to yield anagenic responses.

One interesting finding was that anagenic interpretations of speciation were much more common for the diagrams depicting hominid ($M = 0.13$) than horse ($M = 0.07$) evolution. We will discuss differences in the results for the two sets of taxa in the next section, as they also appear for interpretations of evolutionary relationships in terms of levels of common ancestry.

4.2. Effects of diagram format on interpretations of evolutionary history in terms of ancestry

Our second hypothesis was that branching depictions of evolutionary history are more likely than linear depictions to lead to interpretations of evolutionary relationships in terms

of levels of ancestry. Two sets of analyses tested this hypothesis. One set examined a composite measure of accuracy and evidence quality for the evolutionary distance question for each set of taxa. The second set examined mean evidence quality across the remaining questions for each set of taxa. For three of the four analyses there was a significant effect of diagram format, in each case indicating better understanding of evolutionary relationship in terms of levels of common ancestry for the two cladogram formats than for the textbook diagrams (overall M s of 0.53 for the tree cladograms, 0.45 for the ladder cladograms, and 0.23 for the textbook diagrams).

The one exception was for the measure of shared ancestry for Questions 2 and 3 for the hominid diagrams, for which subjects gave similarly poor responses regardless of diagram format (overall $M = 0.24$). Thus, subjects were more likely to interpret evolutionary history as reflecting anagenesis and less likely to interpret it as reflecting levels of shared ancestry for the hominid taxa than for the horse taxa. This combination of results suggests that students do not clearly understand that hominid evolution operates under the same principles that drive the evolution of other taxa (also see Evans, 2001). Given Catley and Novick's (2008) analysis of the evolutionary diagrams found in contemporary biology textbooks, this misconception may reflect what students, perhaps inadvertently, have been taught. Not only are linear depictions of evolutionary history more likely to involve hominid evolution than the evolution of any other subset of life on Earth, but both across and within textbooks, the corpus of evolutionary diagrams suggests that the hominid and great ape lineages split as a branching event (cladogenesis), but evolution within the hominid lineage subsequently followed a primarily linear, anagenic process, with one species turning into another until the "final" appearance of *H. sapiens*.

4.3. The Gestalt principle of good continuation

Our previous research has found that college students, even those with stronger backgrounds in biology, have difficulty extracting the correct hierarchical structure from ladder format cladograms due to the Gestalt principle of good continuation (Novick & Catley, 2007, unpublished data). Because of the nature of this misinterpretation, we predicted that subjects in the present study would miscount the number of lines (evolutionary branches) extending from a particular location on the horse ladder cladogram. In particular, we predicted that they would count the two lines that extend up from the "main" diagonal line of the ladder but would miss the branch that is the rightmost part of that diagonal. The results supported our prediction. Moreover, students with both weaker and stronger backgrounds in biology were equally likely to make this error.

4.4. Effects of diagram format on the responses of stronger background students

Finally, we predicted that the diagram effects would be found for subjects with stronger as well as weaker backgrounds in biology, despite the overall better performance by the stronger background students. This prediction was confirmed. Importantly, greater expertise in biology did not inoculate students against inappropriate interpretations of evolution

suggested by the linear depictions of ancestry found in some textbook diagrams. Moreover, for only two measures, both involving appropriate interpretations of evolutionary history in terms of levels of ancestry, did diagram type interact with biology background. In both cases the (predicted) diagram effects were due primarily (or solely) to the stronger background subjects. Although for these two measures the biasing effect of cladogenic depictions on interpretations in terms of ancestry was (largely) confined to stronger background students, for the other two such measure the diagram effects were consistent across subject groups.

4.5. Implications for evolution education

Novick and Catley (2007, 2009) found that college students perform better on a variety of tree-thinking tasks when evolutionary relationships are depicted in a tree cladogram rather than a ladder cladogram. The present results indicate that both cladogram formats foster better reasoning than the noncladogenic depictions that coexist in contemporary textbooks. One implication of our results, therefore, is that textbook authors and illustrators should avoid diagrams that contain linear components that inappropriately suggest that speciation is the result of anagenesis. A second implication, for both textbooks and classroom teachers, is that in introducing tree thinking into high school and college biology curricula (e.g., see Baum et al., 2005; Catley, 2006; Goldsmith, 2003), curriculum materials should use tree format cladograms.

Cladograms in general, and the tree format in particular, may be especially important for overcoming many students' belief that our own species (*H. sapiens*) is special and not subject to the same laws of evolution that apply to the rest of Earth's biota, both extinct and extant (Evans, 2001). Among our subjects, anagenic explanations were more common for the questions about the hominid than the horse textbook diagram (M s of 0.25 and 0.14, respectively). For the hominid taxa, simply switching from the textbook diagram to a tree cladogram reduced such inappropriate responses by an impressive 84% (to $M = 0.04$); the reduction was smaller, but still noteworthy, for the ladder cladogram (52% to $M = 0.12$).

It is clear that teachers of evolution need to pay close attention to how evolutionary relationships among taxa are depicted diagrammatically as well as to how the supporting concepts are described verbally. By providing students with appropriate tools, science educators have the best chance to help them conceptualize the historical processes that provide the pattern of biological diversity we see in the world.

4.6. Broader implications

4.6.1. Representations of historical events

Unlike other areas of biological science, evolutionary biology is a historical discipline. As such, it shares much with a number of other fields that take a historical approach to understanding the world, including, for example, world history (see O'Hara, 1988), historical and comparative linguistics (where representations resembling ladder cladograms are used; e.g., Ringe, Warnow, & Taylor, 2002), historical geology, paleontology, genealogy, archeology, anthropology, and historical geography. Linear depictions of historical events

are simplistic because they suggest a single, straight-line path from a starting point to an ending point. History, of any type, rarely proceeds in such a fashion. Although it is unlikely that all historical events can be represented by strictly hierarchical branching diagrams as can evolutionary (and, perhaps, linguistic) history, the more general point should hold: Representations that have a richer or more varied topological structure are likely to privilege more complex, and therefore more accurate (or at least more nuanced), understandings of the concepts being represented. Our results concerning differences in interpretation for linear versus branching representations of evolutionary history provide one example of this general hypothesis. We challenge other cognitive scientists to collaborate with researchers in the historical disciplines noted earlier (e.g., world history, linguistics, geology) to extend these findings to those fields.

4.6.2. *The science of diagram design*

Our results support an emerging pattern of findings indicating that the science of diagram design needs to take into account perceptual and other biases that viewers bring to the task of interpreting diagrams (e.g., Zacks & Tversky, 1999), biases that may not be easily overcome by simply instructing viewers concerning the representational conventions of the diagram in question (e.g., Catley, Novick, & Funk, unpublished data; Corter et al., 2008; Novick, Catley, & Funk, unpublished data). A set of discrete elements connected along a line, for example, suggests to viewers a process of replacement of one entity by that which comes next in the sequence.

The Gestalt principle of good continuation, to take another example, leads viewers to interpret a continuous line as a single entity (e.g., Kellman, 2000). If the representational convention requires viewers to assign different interpretations to different parts of a continuous line, as for ladder cladograms, comprehension and reasoning suffer (Novick & Catley, 2007, unpublished data). In the present study, this perceptual principle led subjects to get the wrong answer for the very simple task of counting how many lines extend from a particular point on the diagram.

Another constraint that viewers bring to the task of interpreting arrangements of visual elements, discussed by Corter et al. (2008), is reading order for written language. Absent a natural starting point in a diagram, viewers tend to scan the elements in the same order in which they read a page of text (Corter et al., 2008; Taylor & Tversky, 1992). Corter et al. found that processing information-system diagrams according to reading order rather than the pattern of connectivity among elements led to systematic errors of interpretation. In research in progress, we have found similar results for the ladder cladogram format, which is quite different from the type of diagram studied by Corter et al.

In sum, good diagram design requires creating representations and associated conventions that work with rather than against viewers' "natural" ways of processing arrangements of visual elements. We challenge researchers in the field of diagram design to identify additional cognitive and perceptual processing factors that underlie diagram interpretation, with the ultimate goal of providing a coherent classification of such domain-general constraints on good design.

Note

1. The second author's honors thesis made additional distinctions among subjects' responses that received a quality score of 0. Given the focus of the present article, all such codes except *anagenesis* were administratively recoded as *other* by the first author. The original coding was done such that (a) all codes, even those that earned a quality score of 0, were ranked according to their level of sophistication and (b) if more than one code applied to a subject's response, the highest ranked code was assigned. Because the *anagenesis* code was near the bottom of the rank ordering, all responses that had received a 0-credit code above *anagenesis* in the rank ordering had to be checked to determine whether that code applied before reassigning the response to the *other* category. The first author did this blind to condition, using the coding guide definition and the previously-agreed-upon *anagenesis* responses as models.

Acknowledgments

We thank Dan Funk at Vanderbilt University for allowing us to collect data from the students enrolled in his evolution classes across two semesters. We thank Amy Garza, Marissa Mencio, and Emily Schreiber for help in collecting the data and Amy Garza for help with coding the data. Much of the data presented here were collected and reported by the second author for her undergraduate honors thesis at Vanderbilt University. Some of the data collection as well as the preparation of this manuscript were supported in part by the Institute of Education Sciences, U.S. Department of Education, through grant R305A080621 to Vanderbilt University. The opinions expressed are those of the authors and do not represent views of the Institute or the U.S. Department of Education.

References

- Baum, D. A., Smith, S. D., & Donovan, S. S. (2005). The tree-thinking challenge. *Science*, *310*, 979–980.
- Bishop, B. A., & Anderson, C. W. (1990). Student conceptions of natural selection and its role in evolution. *Journal of Research in Science Teaching*, *27*, 415–427.
- Catley, K. M. (2006). Darwin's missing link: A new paradigm for evolution education. *Science Education*, *90*, 767–783.
- Catley, K. M., & Novick, L. R. (2008). Seeing the wood for the trees: An analysis of evolutionary diagrams in biology textbooks. *BioScience*, *58*, 976–987.
- Catley, K. M., Novick, L. R., & Shade, C. K. (in press). Interpreting evolutionary diagrams: when topology and process conflict. *Journal of Research in Science Teaching*.
- Chiras, D. D. (2002). *Human biology: Health, homeostasis, and the environment* (4th ed.). Sudbury, MA: Jones and Bartlett.
- Clark, C. A. (2001). Evolution for John Doe: Pictures, the public, and the Scopes trial debate. *The Journal of American History*, *87*, 1275–1303.

- Corter, J. E., Nickerson, J. V., Tversky, B., Zahner, D., & Rho, Y. J. (2008). Using diagrams to design information systems. In B. C. Love, K. McRae, & V. M. Sloutsky (Eds.), *Proceedings of the thirtieth annual conference of the Cognitive Science Society* (pp. 2259–2264). Austin, TX: Cognitive Science Society.
- Evander, R. L. (1989). Phylogeny of the family *Equidae*. In D. R. Prothero & R. M. Schoch (Eds.), *The evolution of Perissodactyls* (pp. 109–127). New York: Oxford University Press.
- Evans, E. M. (2001). Cognitive and contextual factors in the emergence of diverse belief systems: Creation versus evolution. *Cognitive Psychology*, *42*, 217–266.
- Foley, R. (1987). Hominid species and stone-tool assemblages: How are they related? *Antiquity*, *61*, 380–392.
- Goldsmith, D.W. (2003). Presenting cladistic thinking to biology majors and general science students. *The American Biology Teacher*, *65*, 679–682.
- Gould, S. J. (1995). Ladders and cones: Constraining evolution by canonical icons. In R. B. Silver (Ed.), *Hidden histories of science* (pp. 37–67). New York: NYREV.
- Hegarty, M., Carpenter, P. A., & Just, M. A. (1991). Diagrams in the comprehension of scientific texts. In R. Barr, M. L. Kamil, P. Mosenthal, & P. D. Pearson (Eds.), *Handbook of reading research* (Vol. 2, pp. 641–668). New York: Longman.
- Hurley, S. M., & Novick, L. R. (in press). Solving problems using matrix, network, and hierarchy diagrams: The consequences of violating construction conventions. *The Quarterly Journal of Experimental Psychology*.
- Johnson, G. B. (1998). *Biology: Visualizing life*. Austin, TX: Holt, Rinehart and Winston.
- Johnson, G. B., & Raven, P. H. (2001). *Biology: Principles & explorations*. Austin, TX: Holt, Rinehart and Winston.
- Kellman, P. J. (2000). An update on Gestalt psychology. In B. Landau, J. Sabini, J. Jonides, & E. Newport (Eds.), *Perception, cognition, and language: Essays in honor of Henry and Lila Gleitman*. Cambridge, MA: MIT Press.
- Lynch, M. (1990). The externalized retina: Selection and mathematization in the visual documentation of objects in the life sciences. In M. Lynch & S. Woolgar (Eds.), *Representation in scientific practice* (pp. 153–186). Cambridge, MA: MIT Press.
- McKim, R. H. (1980). *Thinking visually: A strategy manual for problem solving*. Belmont, CA: Wadsworth.
- Novick, L. R. (2001). Spatial diagrams: Key instruments in the toolbox for thought. In D. L. Medin (Ed.), *The psychology of learning and motivation* (Vol. 40, pp. 279–325). San Diego, CA: Academic Press.
- Novick, L. R. (2006a). The importance of both diagrammatic conventions and domain-specific knowledge for diagram literacy in science: The hierarchy as an illustrative case. In D. Barker-Plummer, R. Cox, & N. Swoboda (Eds.), *Diagrammatic representation and inference (Diagrams 2006)*, *LNAI 4045* (pp. 1–11). Berlin: Springer-Verlag.
- Novick, L. R. (2006b). Understanding spatial diagram structure: An analysis of hierarchies, matrices, and networks. *The Quarterly Journal of Experimental Psychology*, *59*, 1826–1856.
- Novick, L. R., & Catley, K. M. (2007). Understanding phylogenies in biology: The influence of a Gestalt perceptual principle. *Journal of Experimental Psychology: Applied*, *13*, 197–223.
- Novick, L. R., & Hurley, S. M. (2001). To matrix, network, or hierarchy: That is the question. *Cognitive Psychology*, *42*, 158–216.
- O'Hara, R. J. (1988). Homage to Clio, or, toward an historical philosophy for evolutionary biology. *Systematic Zoology*, *37*, 142–155.
- Ringe, D., Warnow, T., & Taylor, A. (2002). Indo-European and computational cladistics. *Transactions of the Philological Society*, *100*, 59–129.
- Shtulman, A. (2006). Qualitative difference between naïve and scientific theories of evolution. *Cognitive Psychology*, *52*, 170–194.
- Taylor, H. A., & Tversky, B. (1992). Descriptions and depictions of environments. *Memory & Cognition*, *20*, 483–496.
- van Tuijl, H. F. J. M. (1980). Perceptual interpretation of complex line patterns. *Journal of Experimental Psychology: Human Perception and Performance*, *6*, 197–221.

Tversky, B., Zacks, J., Lee, P. U., & Heiser, J. (2000). Lines, blobs, crosses and arrows. In M. Anderson, P. Cheng, & V. Haarslev (Eds.), *Theory and application of diagrams* (pp. 221–230). Edinburgh: Springer.

Zacks, J., & Tversky, B. (1999). Bars and lines: A study of graphic communication. *Memory & Cognition*, 27, 1073–1079.

Appendix: Questions asked about each set of diagrams

Hominid diagrams: Questions discussed in the text are marked with an asterisk.

- *1. Which taxon—*H. habilis* or *H. sapiens*—is the closest evolutionary relation to *H. erectus*?
What evidence supports your answer?
- *2. The diagram splits at the point indicated by the dashed circle. How do you interpret this split?
- *3. *A. robustus* and *A. africanus/bosei* are joined together. What does this tell you about the evolutionary relationship between these two taxa? [*A. africanus* was used for the textbook diagram and *A. bosei* was used for the cladograms because those are the corresponding taxa across diagrams.]
- 4. What is the evolutionary relationship between *A. afarensis* and all the rest of the taxa?

Horse diagrams: Questions discussed in the text are marked with an asterisk.

- *1. Which taxon—*Equus* or *Miohippus*—is the closest evolutionary relation to *Merychippus*?
What evidence supports your answer?
- *2. Notice that multiple lines extend up from the location marked by the dotted circle on the diagram.
 - a. How many lines extend up from this location? _____
 - b. What is the relationship among these lines?
- *3. The lines leading from *Merychippus*, *Z*, and *Pliohippus* all meet at a common place. What does this tell you about the relationship among these three taxa?
- *4. Scientists have recently discovered that *Miohippus* had a novel shaped bone in its middle ear. Is *Eohippus* or *Pliohippus* more likely to also have had this bone in its middle ear?
What evidence supports your answer?

[The next question was asked about the textbook diagram only.]

- 5. Near the bottom of the diagram is an arrow. How do you interpret the indicated part of this diagram?