

Trapped Mermaid

Joelle Thompson

Columbia College
Missouri Epsilon Chapter

Vol. 1(2), 2016

Article Title: Trapped Mermaid

DOI: 10.21081/ax0056

ISSN: 2381-800X

Key Words: art, trafficking, illustration, ink, gouache, projection

This work is licensed under a Creative Commons Attribution 4.0 International License.

Author contact information is available from the Editor at editor@alphachihonor.org.

Aletheia—The Alpha Chi Journal of Undergraduate Scholarship

- This publication is an online, peer-reviewed, interdisciplinary undergraduate journal, whose mission is to promote high quality research and scholarship among undergraduates by showcasing exemplary work.
- Submissions can be in any basic or applied field of study, including the physical and life sciences, the social sciences, the humanities, education, engineering, and the arts.
- Publication in *Aletheia* will recognize students who excel academically and foster mentor/mentee relationships between faculty and students.
- In keeping with the strong tradition of student involvement in all levels of Alpha Chi, the journal will also provide a forum for students to become actively involved in the writing, peer review, and publication process.
- More information and instructions for authors is available under the publications tab at www.AlphaChiHonor.org. Questions to the editor may be directed to editor@alphachihonor.org.

Alpha Chi is a national college honor society that admits students from all academic disciplines, with membership limited to the top 10 percent of an institution's juniors, seniors, and graduate students. Invitation to membership comes only through an institutional chapter. A college seeking a chapter must grant baccalaureate degrees and be regionally accredited. Some 300 chapters, located in almost every state, induct approximately 12,000 members annually. Alpha Chi members have been "making scholarship effective for good" since 1922.

Article Title: Trapped Mermaid

DOI: 10.21081/ax0056

ISSN: 2381-800X

This work is licensed under a Creative Commons Attribution 4.0 International License.

Trapped Mermaid

Joelle Thompson

Columbia College
Missouri Epsilon Chapter

Artist Statement

The world of fantasy is a world of escapism; it is where the multitudes hide from their problems and seek out adventure. This separation between the painful truth of reality and the numbing bliss of fiction fuels this series of illustrations. A narrative confronts the viewer with the pain of sex trafficking through the very means most people use to look away—fictional imagery. I am particularly inspired by the contemporary artist, Alfredo Jaar, and his recent projection installation that expressed suffering through silhouettes (Jaar, *Shadows*.)

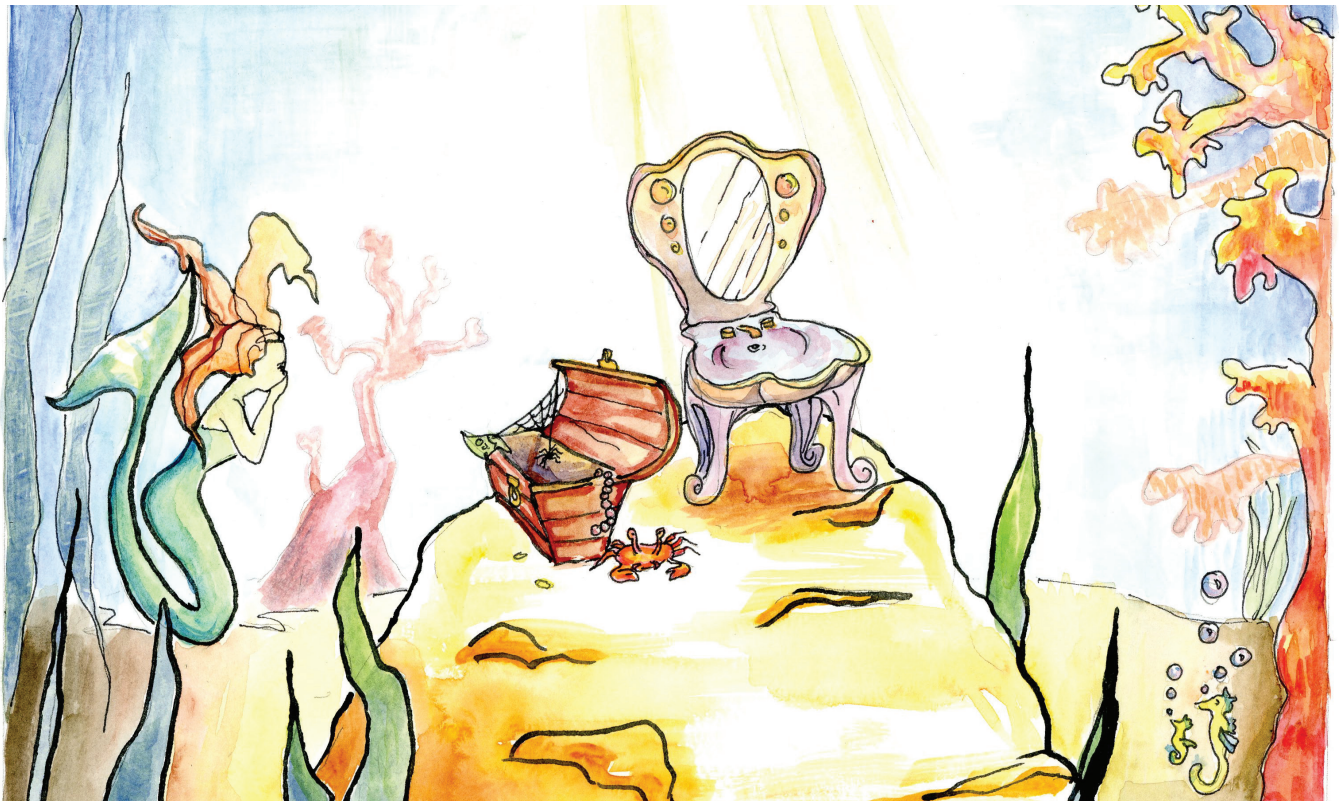
The saturated color of this mermaid's life slowly degrades to black and white as she loses more of her freedom through desperate circumstances. Left with the viewer is a clear and dramatic message, the imperative to lock eyes with human pain and ponder the prevention of tragedy.

These illustrations consist of India ink contour lines below layers of gouache paint on watercolor paper. After color scanning, digital touches in hue and saturation were made. Such a step enhances the emotional resonance, since each image is conceived as a life-sized projection in a dark room, more impactful for the lack of surrounding distractions.

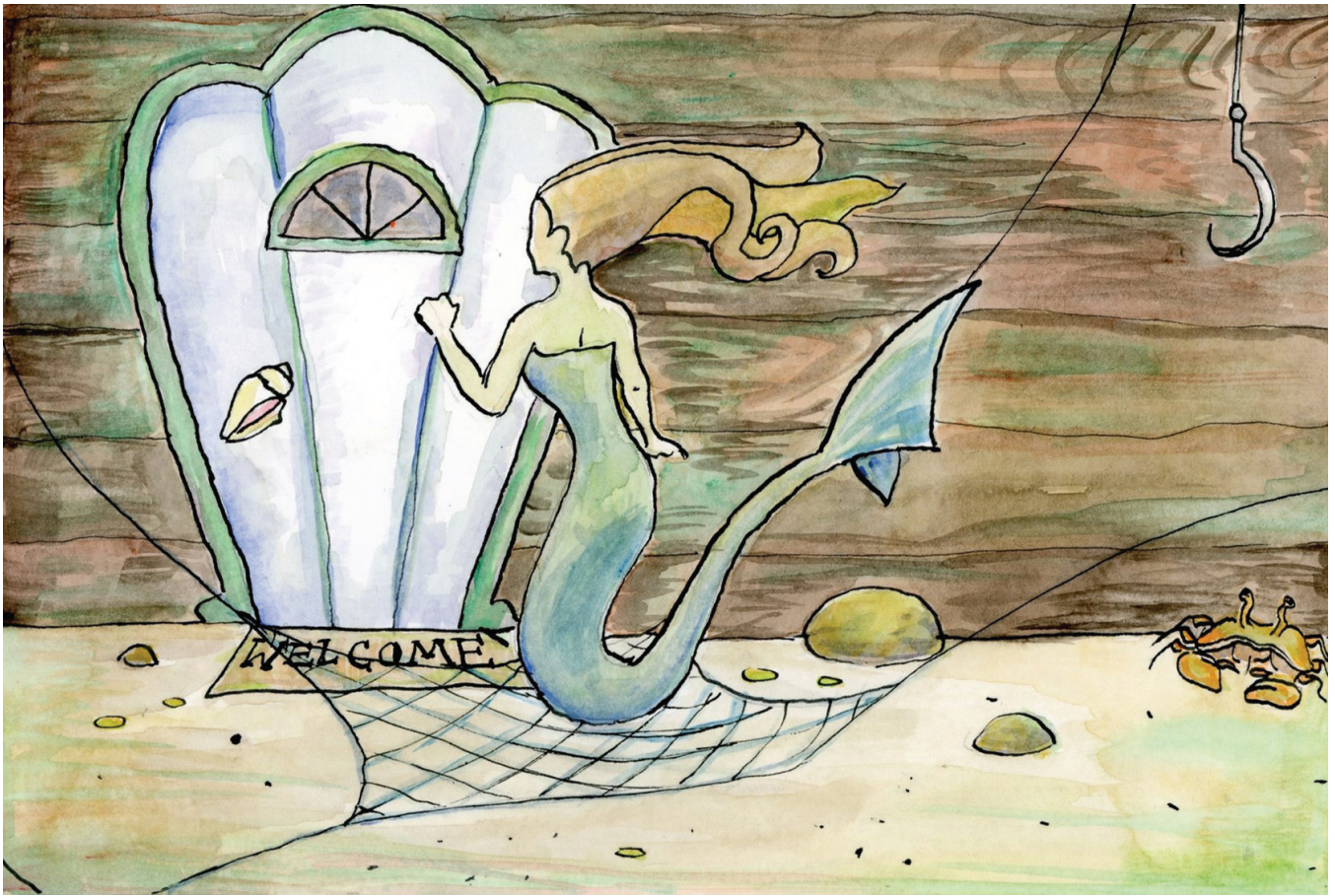
Keywords: Art, trafficking, illustration, ink, gouache, projection



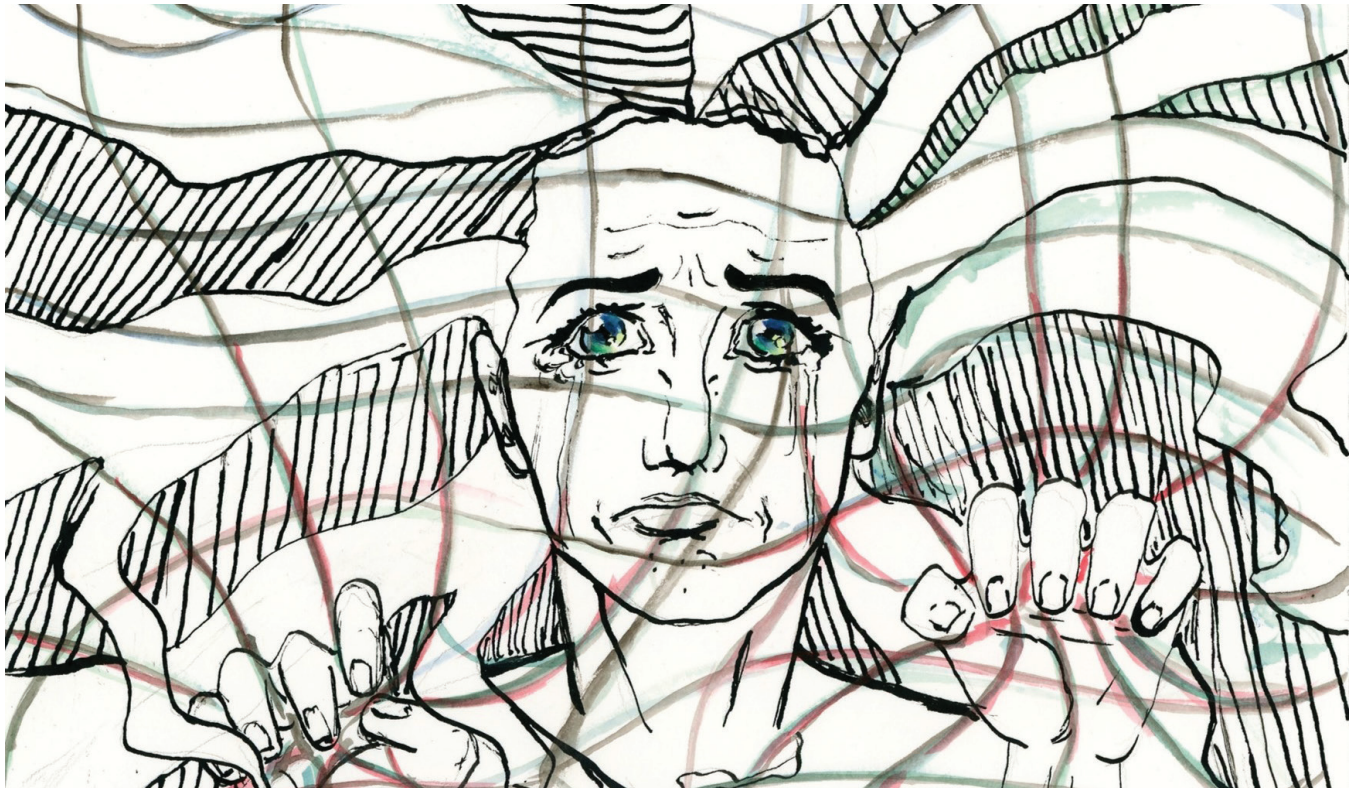
“Figure 1,” Mixed Media, 2016



"Figure 2," Mixed Media, 2016



"Figure 3," Mixed Media, 2016



“Figure 4,” Mixed Media, 2016



“Figure 5,” Mixed Media, 2016



“Figure 6,” Mixed Media, 2016

Work Cited

Jaar, Alfredo. *Shadows*. 2014. Mixed-media installation. SCAD Museum of Art, Savannah, Georgia. *Savannah Art Informer*. Web. 11 April 2016.