

(1966) suggest that the gradual increase of shock reduces the "subjective severity" of the later more intense shock.

The technique of gradually increasing shock intensity used in this study for the gradual groups, has its counterpart in the systematic desensitization type of therapy and thus may have important research implications.

#### REFERENCES

- CHURCH, M., LoLORDO, V., OVERMEIR, J. B., SOLOMON, R. L., & TURNER, L. H. Cardiac responses to shock in curarized dog: Effects of shock intensity and duration, warning signal and prior experience with shock. *Journal of Comparative and Physiological Psychology*, 1966, **62**, 1-7.
- GRAHAM, F. K., & CLIFTON, R. K. Heart rate change as a component of the orienting response. *Psychological Bulletin*, 1966, **65**, 305-320.
- HARRIS, A. H., & BRADY, J. V. Animal learning—visceral and autonomic conditioning. *Annual Review of Psychology*, 1974, **25**, 107-133.
- KATCHER, A. H., SOLOMON, R. L., TURNER, L. H., LoLORDO, V., OVERMEIR, J. B., & RESCORLA, R. A. Heart rate and blood pressure response to signaled and unsignaled shocks: Effects of cardiac sympathectomy. *Journal of Comparative and Physiological Psychology*, 1969, **68**, 163-174.
- MEREDITH, A. L., & SCHNEIDERMAN, N. Heart rate and nictitating membrane classical discrimination conditioning in rabbits under delay versus trace procedures. *Psychonomic Science*, 1967, **9**, 139-140.
- OBRIST, P. A., WOOD, D. M., & PEREZ-REYES, M. Heart-rate during conditioning in humans: Effects of UCS intensity, vagal blockade, and adrenergic block of vasomotor activity. *Journal of Experimental Psychology*, 1965, **70**, 32-42.
- SCHNEIDERMAN, N., VAN DER CAR, D. H., YEHLE, A. L., MANNING, A. A., GOLDEN, T., & SCHNEIDERMAN, E. Vagal compensatory adjustment: Relationship to heart rate classical conditioning in rabbits. *Journal of Comparative and Physiological Psychology*, 1969, **68**, 175-183.
- YEHLE, A. L., DAUTH, G., & SCHNEIDERMAN, N. Correlates of heart-rate classical conditioning in curarized rabbits. *Journal of Comparative and Physiological Psychology*, 1967, **64**, 98-104.
- YEHLE, A. L., LAI, H., & SHEN, H. Maintenance of heart-rate responding during classical conditioning of the rabbit. *Psychological Reports*, 1971, **29**, 1341-1342.

(Received for publication December 10, 1975.)

#### ERRATUM

Whishaw, I. Q. Light aversion of normal and posterior neocorticate rats. *Bulletin of the Psychonomic Society*, 1976, **7** (1), 96-98. Figure 1 on Page 97 was inadvertently omitted in printing. It is reproduced below. We apologize for the error.

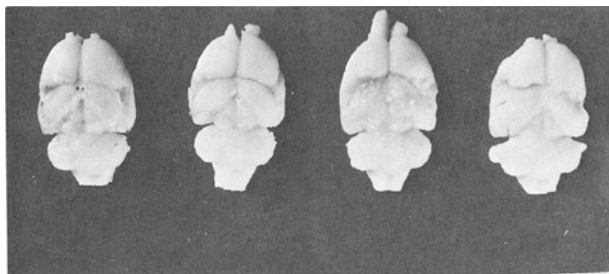


Figure 1. Representative examples of brains of posterior neocorticate lesioned rats. Such lesions are accompanied by complete degeneration of the dorsal part of the lateral geniculate body (see Bland & Cooper, 1970).